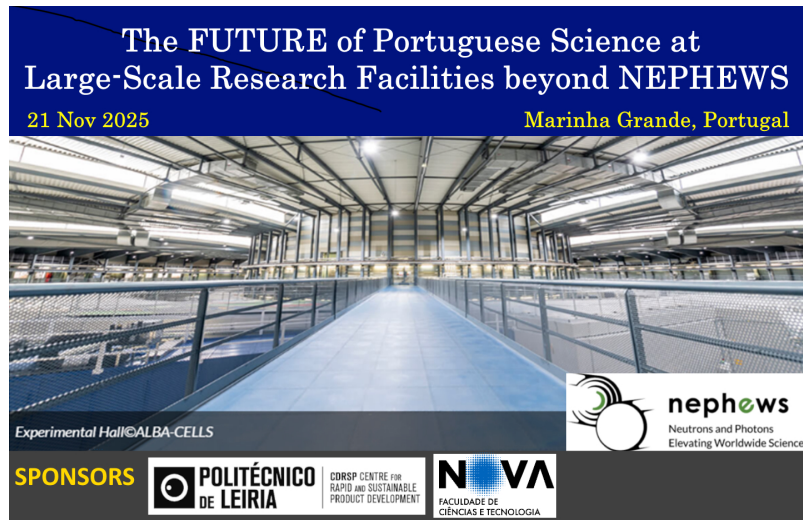


International Meeting - Hybrid Event



Friday 21 November 2025 - Friday 21 November 2025

Marinha Grande

Scientific Programme

9h30 -10h00 Registration

10h00 -10h10 Welcome Professor Pedro Assuncao Vice-President of the Polytechnic of Leiria
Opening Remarks Professor Ana G Silva (New University of Lisbon) Professor Geoffrey R Mitchell
(Polytechnic of Leiria)

Morning Session I - Science and Technology Opportunities at International Large-Scale Facilities

Morning Session II - Broadening Access to Large-Scale Research Facilities

Afternoon Session I - Science at Large Scale Facilities

Afternoon Session II – Science performed at Facilities with NEPHEWS Support. Flash presentations

Afternoon Session III - The Future

REGISTRATION

9h30 -10h00 Registration and Poster set-up

OPENING CEREMONY

10h00 -10h10

Welcome **Professor Pedro Assunção** Vice-President of the Polytechnic of Leiria
Opening Remarks
Professor Ana G Silva, New University of Lisbon
Professor Geoffrey R Mitchell, Polytechnic of Leiria

SCIENCE AND TECHNOLOGY OPPORTUNITIES AT INTERNATIONAL LARGE-SCALE RESEARCH INFRASTRUCTURES

10h10-10h30

Klaus Attenkofer - *From the Model System to the Application: How ALBA Supports Science & Innovation*
Scientific Director at ALBA Synchrotron, Barcelona, Spain

10h30-10h50 "Introduction to the ISIS Neutron and Muon Source"

Victoria Garcia Sakai *Introduction to the ISIS Neutron and Muon Source*
Head of Neutron Spectroscopy Division
ISIS Neutron and Muon Source, Science and Technology Facilities Council (STFC), UK

10h50-11h00

Kim Lefmann *DanScatt, the Danish model for supporting access to Large-Scale Research Facilities*

11h00-11h20

Antoine Barbier *Synchrotron radiation to uncover the nanoworld: Some case studies at Synchrotron SOLEIL*

Research Director at SPEC-IRAMIS, CEA and an associated staff member at the synchrotron SOLEIL, France.

11h20-11h40

Posters Session. Coffee Break

BROADENING ACCESS to LARGE-SCALE RESEARCH INFRASTRUCTURES

11h40-12h00

Piotr Piwowarczyk *NEPHEWS support for Portuguese user communities' use of Neutron and Photon sources*

NEPHEWS Project Coordinator, SOLARIS, Krakow, Poland

12h00-12h20

Cormac McGuinness

President of European Synchrotron and Free Electron Laser User Organisation (ESUO), Trinity College, Dublin

12h20-12h40

Astrid Schneidewind

President of European Neutron Scattering Association (ENSA)

12h40-13h30

Buffet Lunch. Poster Session. Networking.

SCIENCE at LARGE-SCALE RESEARCH INFRASTRUCTURES

13h30-13h50

Bárbara Calisto *LEAPS and the opportunities for the Synchrotron and FEL Users*

International Relationships and Innovation Agent, ALBA Synchrotron, Barcelona, Spain

13h50-14h10

Michela Dell'Anno Boulton *An introduction to the European Spallation Source*

Governance Office Lead, European Spallation Source (ESS) ERIC, Sweden

14h10-14h30

Theyencheri Narayanan *Five Years of ESRF-EBS: Pushing Boundaries of Synchrotron-based Science*

Time-Resolved Ultra Small-Angle X-Ray Scattering Beamline Responsible, ESRF, France

14h30-14h50

Geoffrey R Mitchell *Operando X-ray scattering Measurements during the Injection Moulding of Plastics*

Centre for Rapid and Sustainable Product Development, Polytechnic of Leiria

PORTUGUESE ASSOCIATION OF USERS OF LARGE-SCALE INTERNATIONAL RESEARCH INFRASTRUCTURES

14h50-15h10

Celebration of Establishment of the

Associação Portuguesa de Utilizadores de Infraestruturas de Investigação Internacionais de Larga-Escala.

Association of Portuguese Users of Large-Scale International Research Infrastructures.

15h10-15h30

Coffee Break. Poster Session.

SCIENCE PERFORMED with NEPHEWS Project Support

FLASH PRESENTATIONS selected from the submitted abstracts

15h30-15h40 - **João Santos**, *From Metallodrugs to Nanoformulations: Probing Drug-Lipid Interactions by Spectroscopic Methods*, University of Coimbra

15h40-15h50- **Fátima CF Santos**, *The use of large-scale infrastructures in the study of novel sustainable*, PTScience

15h50-16h00 - **Simao Vidinha Pandeirada**, *Depolymerization of PET/PEF Mixed Waste via Urea-Based Eutectic Catalysts: A Combined Experimental and DFT Study*, University of Aveiro

16h00-16h10 - **Ana Isabel Barbosa**, *Mapping the molecular architecture of Skin with Synchrotron*

Light, University of Porto

16h10-16h20 - **Marta Fajardo**, *From LCLS to European XFEL: GoLP's Pathway to Coherent X-ray Science*, Technical University of Lisbon

16h20-16h30 - **José A. Brito**, *Structural and functional insights into hydrogen sulfide homeostasis in pathogenic bacteria*. Universidade Lusófona de Humanidades e Tecnologias

16h30 - 16h35 - **Andrei Salak** - *ENURS 2026* - University of Aveiro

The Future

16h35 - 17h20 - Round Table

17h20 - Closing Ceremony